

International Agency for Research on Cancer



World Health  
Organization



**GLOBAL CANCER  
OBSERVATORY**

# **WHO European Region**

## **The five most common cancer types\***

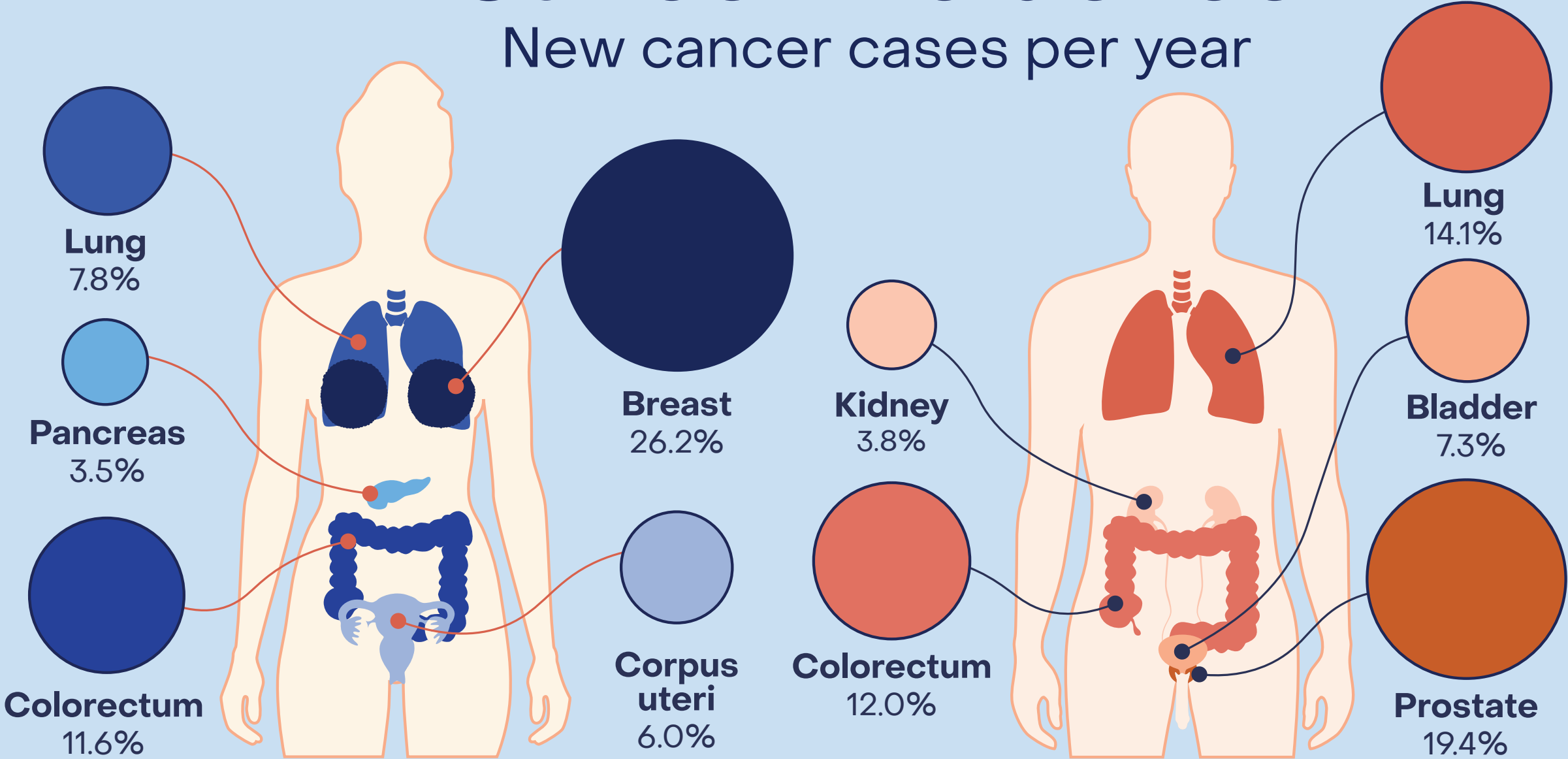


\*Cancer data 2022

New cancer cases (all types):  
**4 878 513**

# Cancer incidence

New cancer cases per year



Cancer deaths (all types):  
**2 211 362**

# Cancer mortality

Cancer deaths per year

